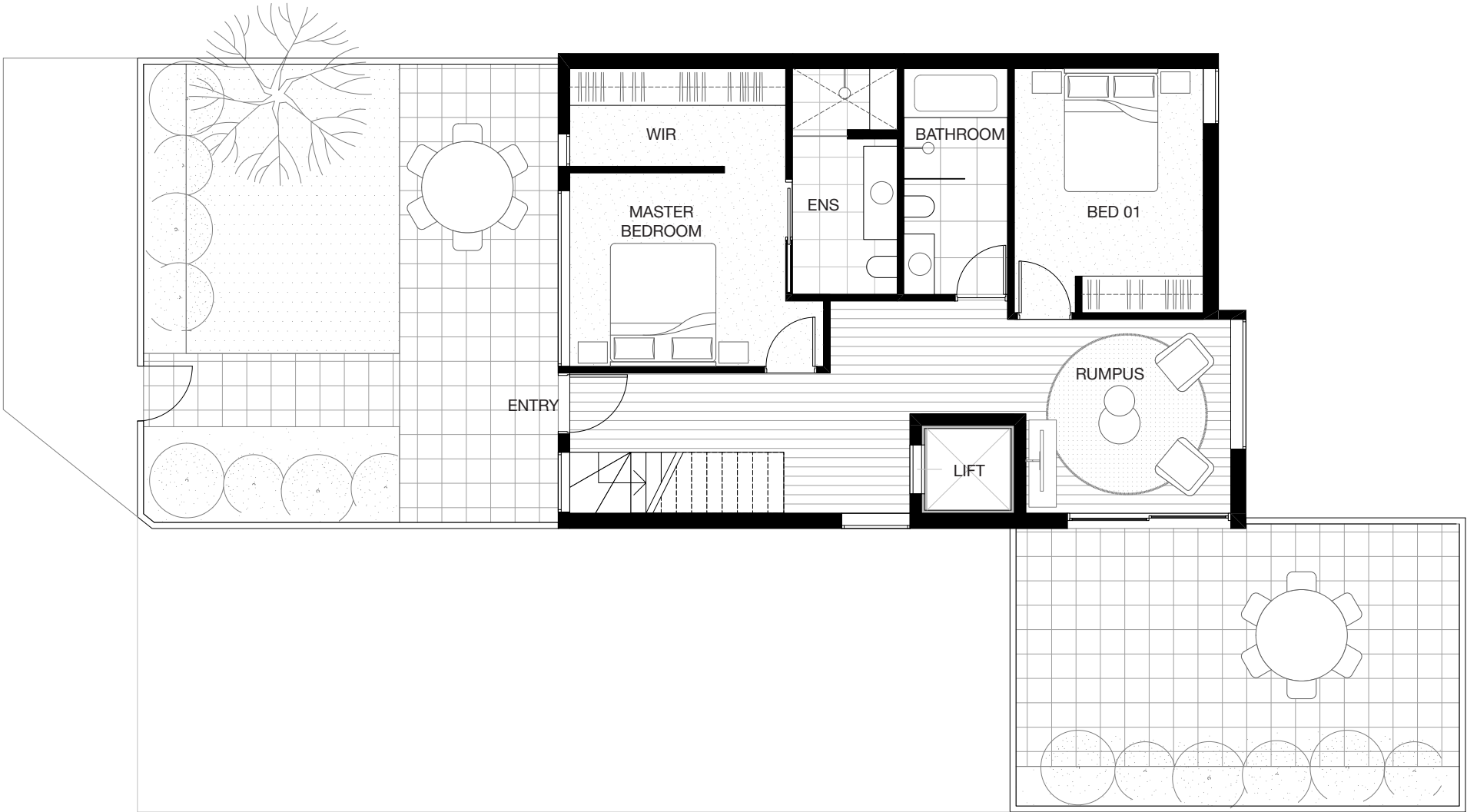


Townhome 06

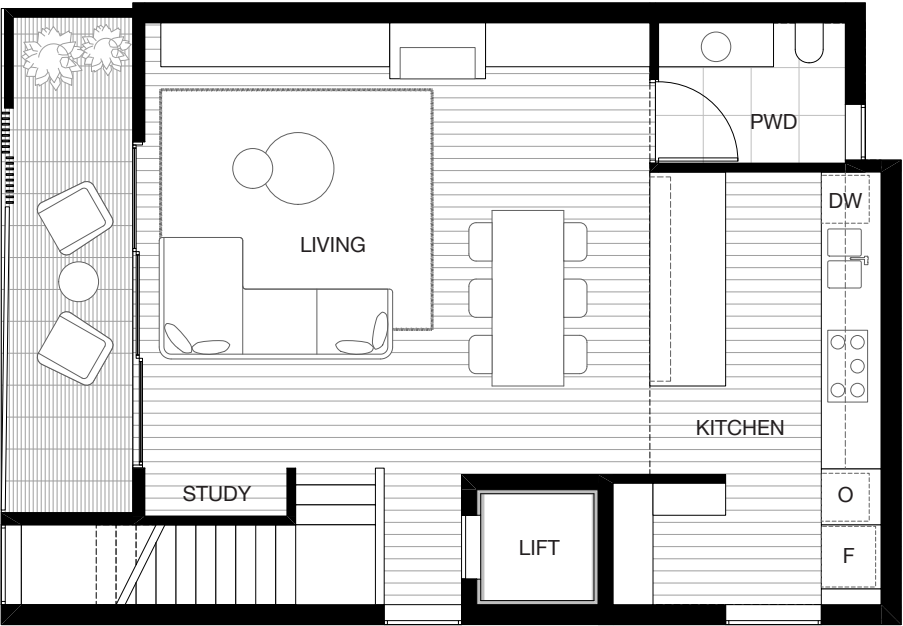
3 Bed + 2 Bath + 1 Pwd
1 Rumpus + 2 Car

Internal 195.6m²
External 64.5m²
Total 260.1m²

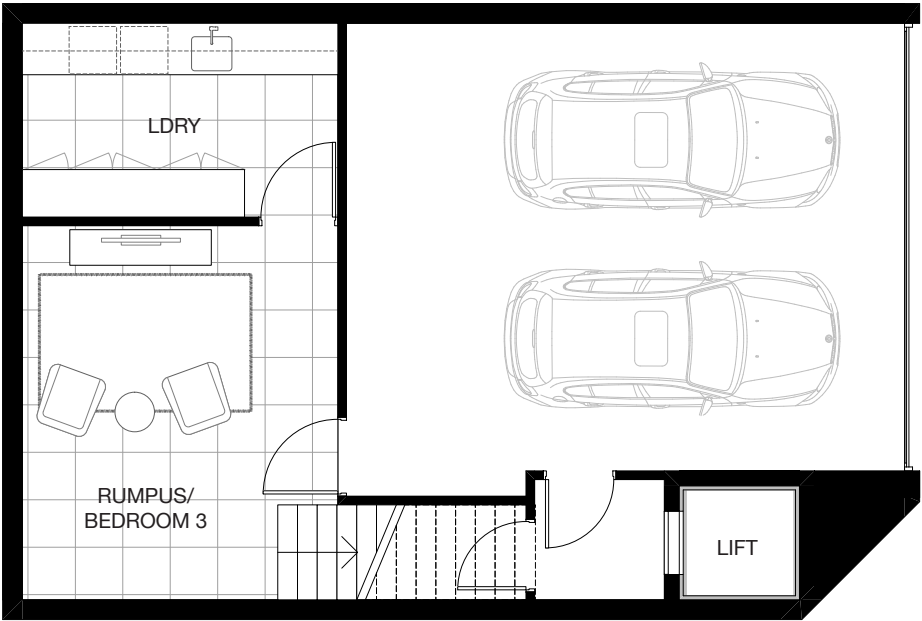
Storage 9.6m³



Ground Floor

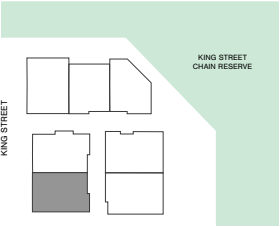


First Floor



Basement

26–28 King St, Balwyn



Disclaimer: Any dimensions, layout, design features, views, areas, images, photographs and artist impressions are for presentation purposes and indicative only. They are also subject to change in accordance with the Contract of Sale. All internal/external furniture are not included. All area calculations are based on The Property Council of Australia Method of Measurement Guidelines and are estimates only. Any dimensions or areas may differ from surveyed areas due to different methods of measurement. Final product may differ from that described. Purchasers should check the plans and specifications included in the Contract of Sale carefully prior to signing the Contract of Sale.
SCALE: NOT TO SCALE. ALL DIMENSIONS ARE APPROXIMATE. Kings Vue © makers CO. all rights reserved.

ANOTHER PROJECT
BROUGHT TO YOU BY

